



2060 Whitfield Park Ave  
Sarasota FL 34243

1-800-TANKLESS or 800-826-5537  
941.755.6529 FAX  
EMAIL INFO@HOTWATERHEATER.COM



This commercial BOOSTER heater and tank combination is used commercially in restaurants for dishwasher booster applications. At 185K BTU per hour it is good for a medium restaurants total needs with the use of one or two mixing valves. Please review the recovery chart table on this product sheet and compare that to the requirements of your system.

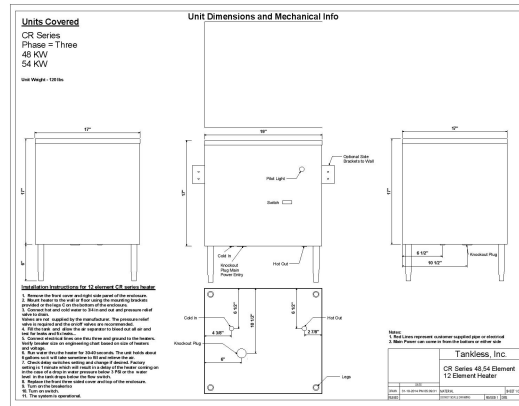
MODEL NAME

CRT 54 KW

FEATURES	DATA
Phase of electricity required	Three
Full load AMP draw at available single phase Voltages	36
N/A means this voltage is not available in this model	65
	n/a
Full load Amp draw at 240	129
Full load Amp Draw at 208	150
	Delta
Individually fused elements	Yes
In/out pipe size	3/4"
Heat Exchanger and enclosure material	304 SS
Enclosure size W x H x D	19 x 17 x 17
Area needed to install and repair	27 x 30 x 40
Enclosure size including fittings and legs	28 x 21 x 18.5
Enclosure rating	NEMA 3, NEMA 4 available
Mounted at customer site via	Side Brackets to Wall or on legs if floor mounted
Efficiency	98.9%
Operating pressure range	0-150 PSI
BTU output per hour	184,248
Maximum output temperature settings available	185
Temperature Adjustability	Yes in one degree increments
Temperature output minimum	125
Dosing tank size	6 gallons
Unit engages When	Tank is full and temperature of the water in the tank is below the requested temperature setting
Number of overtemp protections	Two
Maximum flow in G.P.M. at 60 PSI	32
Shipping weight in Lbs.	120
Shipping box size	40 x 35 x 20
Shipping mode	skid only
Warranty	2 years electrical parts 5 years on heat exchanger



CUT SHEET



RECOVERY CHART

Unit Size	Temperature	Rise/Volume	Temperature	Rise/Volume
in KW	40 F...25 C		72 F...45 C	
	Gallons per Hour	Liters per hour	Gallons per Hour	Liters per Hour
12	122.7	464.4	68.2	258.0
15	153.4	580.5	85.2	322.5
18	184.1	696.6	102.3	387.00
24	245.5	928.9	136.4	516.0
27	276.2	1045.0	153.4	580.5
36	368.2	1393.3	204.6	774.0
48	490.9	1857.7	272.7	1032.1
54	552.3	2089.9	306.8	1161.1

SUGGESTED SPECIFICATION

Booster Water Heater shall be a Wild Dunes Inc. DBA Tankless Inc. model \_\_\_\_\_, with \_\_\_\_\_ KW, and \_\_\_\_\_ vac to heat \_\_\_\_\_ GPM@ a temperature rise of \_\_\_\_\_degrees F.  
Heating elements shall have an incoloy sheath. Heater shall have 3/4" or larger NPT fittings and have stainless steel tank and enclosure.  
Heating unit will be a Wild Dunes Inc. product or approved equal.