



2060 Whitfield Park Ave
Sarasota FL 34243
1-800-TANKLESS or 800-826-5537
941 755 6529 FAX
EMAIL INFO@HOTWATERHEATER.COM



This commercial BOOSTER heater and tank combination is used commercially in restaurants for dishwasher booster applications. At 164K BTU per hour it is good for a small to medium restaurants total needs with the use of one or two mixing valves. Please review the recovery chart table on this product sheet and compare that to the requirements of your system.

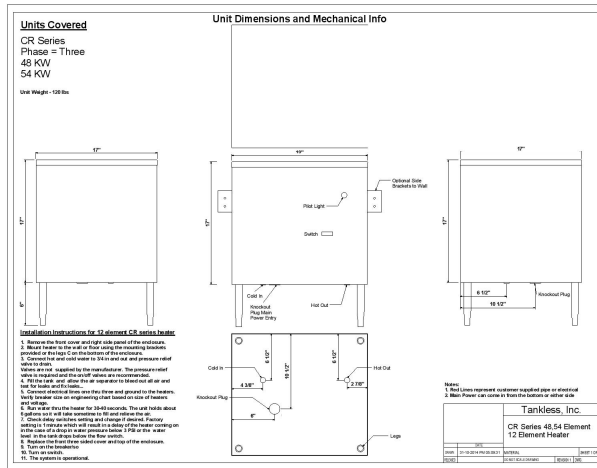
MODEL NAME

FEATURES	DATA
Phase of electricity required	Three
Full load AMP draw at available single phase Voltages	
N/A means this voltage is not available in this model	
	36
	57
	n/a
Full load Amp draw at 240	115
Full load Amp Draw at 208	133
	Delta
Individually fused elements	Yes
In/out pipe size	3/4"
Heat Exchanger and enclosure material	304 SS
Enclosure size W x H x D	19 x 17 x 17
Area needed to install and repair	27 x 30 x 40
Enclosure size including fittings and legs	28 x 21 x 18.5
Enclosure rating	NEMA 3, NEMA 4 available
Mounted at customer site via	Side Brackets to Wall or on legs if floor mounted
Efficiency	98.9%
Operating pressure range	0-150 PSI
BTU output per hour	163,776
Maximum output temperature settings available	185
Temperature Adjustability	Yes in one degree increments
Temperature output minimum	125
Dosing tank size	6 gallons
Unit engages When	Tank is full and temperature of the water in the tank is below the requested temperature setting
Number of overtemp protections	Two
Maximum flow in G.P.M. at 60 PSI	32
Shipping weight in Lbs.	120
Shipping box size	40 x 35 x 20
Shipping mode	skid only
Warranty	2 years electrical parts 5 years on heat exchanger

CRT 18 KW



CUT SHEET



RECOVERY CHART

Unit Size	Temperature	Rise/Volume	Temperature	Rise/Volume
in KW	40 F...25 C		72 F...45 C	
	Gallons per Hour	Liters per hour	Gallons per Hour	Liters per Hour
12	122.7	464.4	68.2	258.0
15	153.4	580.5	85.2	322.5
18	184.1	696.6	102.3	387.00
24	245.5	928.9	136.4	516.0
27	276.2	1045.0	153.4	580.5
36	368.2	1393.3	204.6	774.0
48	490.9	1857.7	272.7	1032.1
54	552.3	2089.9	306.8	1161.1

SUGGESTED SPECIFICATION

Booster Water Heater shall be a Wild Dunes Inc. DBA Tankless Inc. model _____, with _____ KW, and _____ vac to heat _____ GPM@ a temperature rise of _____ degrees F. Heating elements shall have an incoloy sheath. Heater shall have 3/4" or larger NPT fittings and have stainless steel tank and enclosure. Heating unit will be a Wild Dunes Inc. product or approved equal.