

This commercial BOOSTER heater and tank combination is used commercially in restaurants for dishwasher booster applications. At 92K BTU per hour it is good for a small restaurants total needs with the use of one or two mixing valves. Please review the recovery chart table on this product sheet and compare that to the requirements of your system.

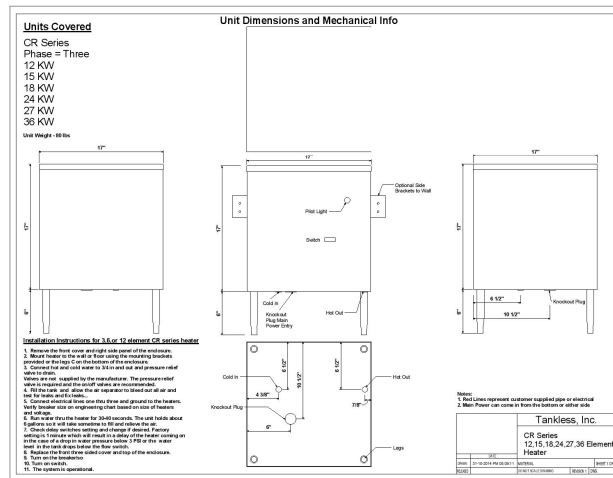
MODEL NAME

| FEATURES  | DATA   |
|---|--|
| Phase of electricity required                         | Three  |
| Full load AMP draw at available single phase Voltages |  |
| N/A means this voltage is not available in this model |  |
|   | N/A  |
|   | 32   |
|   | n/a  |
| Full load Amp draw at 240                             | 65   |
| Full load Amp Draw at 208                             | 75   |
|   | Delta  |
| Individually fused elements                           | Yes  |
| In/out pipe size                                      | 3/4"   |
| Heat Exchanger and enclosure material                 | 304 SS   |
| Enclosure size W x H x D                              | 17 x 17 x 17   |
| Area needed to install and repair                     | 25 x 30 x 40   |
| Enclosure size including fittings and legs            | 17 x 23 x 17   |
| Enclosure rating                                      | NEMA 3, NEMA 4 available   |
| Mounted at customer site via                          | Side Brackets to Wall or on legs if floor mounted  |
| Efficiency  | 98.9%  |
| Operating pressure range                              | 0-150 PSI  |
| BTU output per hour                                   | 92,124   |
| Maximum output temperature settings available         | 185  |
| Temperature Adjustability                             | Yes in one degree increments   |
| Temperature output minimum                            | 125  |
| Dosing tank size                                      | 6 gallons  |
| Unit engages When                                     | Tank is full and temperature of the water in the tank is below the requested temperature setting |
| Number of overtemp protections                        | Two  |
| Maximum flow in G.P.M. at 60 PSI                      | 32   |
| Shipping weight in Lbs.                               | 80   |
| Shipping box size                                     | 40 x 35 x 20   |
| Shipping mode   | UPS  |
| Warranty  | 2 years electrical parts<br>5 years on heat exchanger  |

CRT 27 KW



CUT SHEET



RECOVERY CHART

| Unit Size | Temperature      | Rise/Volume     | Temperature      | Rise/Volume     |
|-----------|------------------|-----------------|------------------|-----------------|
| in KW     | 40 F....25 C     |                 | 72 F....45 C     |                 |
|           | Gallons per Hour | Liters per hour | Gallons per Hour | Liters per Hour |
| 12        | 122.7            | 464.4           | 68.2             | 258.0           |
| 15        | 153.4            | 580.5           | 85.2             | 322.5           |
| 18        | 184.1            | 696.6           | 102.3            | 387.00          |
| 24        | 245.5            | 928.9           | 136.4            | 516.0           |
| 27        | 276.2            | 1045.0          | 153.4            | 580.5           |
| 36        | 368.2            | 1393.3          | 204.6            | 774.0           |
| 48        | 490.9            | 1857.7          | 272.7            | 1032.1          |
| 54        | 552.3            | 2089.9          | 306.8            | 1161.1          |

SUGGESTED SPECIFICATION

Booster Water Heater shall be a Wild Dunes Inc. DBA Tankless Inc. model \_\_\_\_\_, with \_\_\_\_\_ KW, and \_\_\_\_\_ vac to heat \_\_\_\_\_ GPM@ a temperature rise of \_\_\_\_\_ degrees F. Heating elements shall have an incoloy sheath. Heater shall have 3/4" or larger NPT fittings and have stainless steel tank and enclosure. Heating unit will be a Wild Dunes Inc. product or approved equal.