



2060 Whitfield Park Ave
Sarasota FL 34243
1-800-TANKLESS or 800-826-5537
941 755 6529 FAX
EMAIL INFO@HOTWATERHEATER.COM



This commercial heater is a very popular item in the 12 element line. At 184K BTUs per hour it has a wide range of uses and configuration possibilities. The three phase 480 option is a highly efficient choice for this twelve element unit.

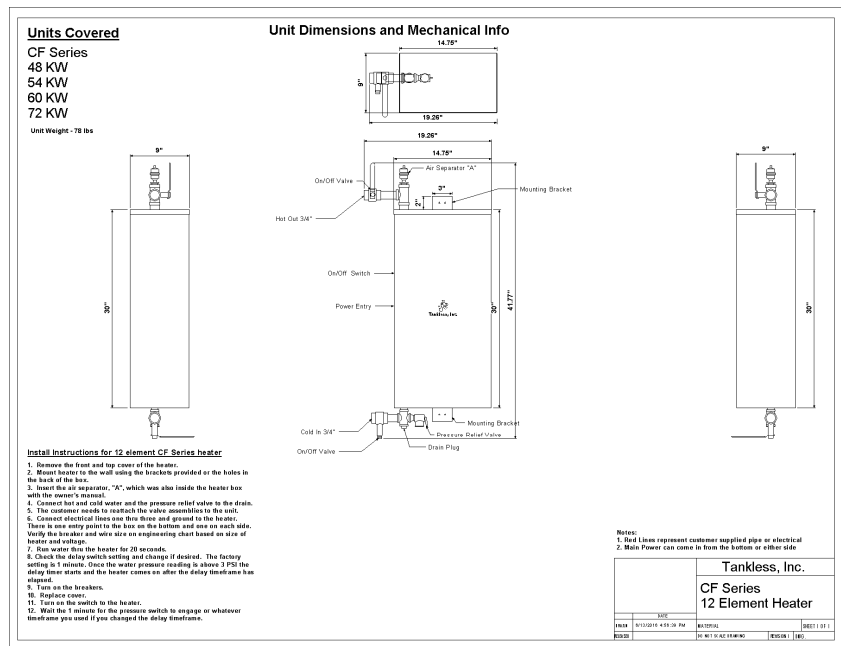
MODEL NAME

CF 54 KW

FEATURES	DATA
Phase of electricity required	Three
Full load AMP draw at available three phase Voltages	
N/A means this voltage is not available in this model	
Full load Amp draw at 575	N/A
Full load Amp draw at 480	65
Full load Amp draw at 380	81
Full load Amp draw at 240	129
Full load Amp Draw at 208	150
Y or Delta configuration for 480 volt units	Delta
In/out pipe size	3/4"
Heat Exchanger material	304 SS
Enclosure size W x H x D	14.75 x 30 x 9
Area needed to install and repair	30 x 53 x 40
Enclosure size including fittings	21.25 x 42 x 9
Enclosure rating	NEMA 3, NEMA 4 available
Mounted at customer site via	Brackets at top and bottom of box
Efficiency	98.90%
Operating pressure range	0-150 PSI
BTU output per hour	184,248
Temperature output maximum	200
Output temperature settings available	90,110,125,145,155,185,200
Output temperature adjustable	No, With the optional ETC you can adjust the temperature in recirculation systems
Temperature output minimum	90
Freeze protection	Standard
Minimum flow to engage	2 G.P.M. with optional flow switch, 0 without the switch
Number of over temp protections	Two
Individually fused elements	Yes
Maximum flow in G.P.M. at 60 PSI	32
Shipping weight in Lbs.	90
Shipping box size	44 x 15 1/8 x 20
Shipping mode	UPS
Warranty	2 years electrical parts 5 years on heat exchanger



CUT SHEET



SUGGESTED SPECIFICATION

Tankless Water Heater shall be a Tankless Inc. model _____, with _____ KW, and _____ vac to heat _____ GPM @ a temperature rise of _____ degrees F. Heating elements shall have an incoloy sheath. Heater shall have 3/4" or larger NPT fittings and have stainless steel heat exchangers and internal plumbing. Hot water storage tanks prohibited. Heating unit will be a Tankless, Inc. product or approved equal.