



2060 Whitfield Park Ave
Sarasota FL 34243
1-800-TANKLESS or 800-826-5537
941 755 6529 FAX
EMAIL INFO@HOTWATERHEATER.COM



This commercial heater is used in many places including food processing, steam cleaning, restaurant dishwashers, and hand washing applications. At 92K BTU per hour it is a popular commercial heater.

MODEL NAME

CF 27 KW

FEATURES	DATA
Phase of electricity required	Three
Full load AMP draw at available three phase Voltages	
N/A means this voltage is not available in this model	
Full load Amp draw at 575	N/A
Full load Amp draw at 480	32
Full load Amp draw at 380	41
Full load Amp draw at 240	65
Full load Amp Draw at 208	75
Y or Delta configuration for 480 volt units	Delta
In/out pipe size	3/4"
Heat Exchanger material	304 SS
Enclosure size W x H x D	14.75 x 20.5 x 9
Area needed to install and repair	30 x 44.5 x 40
Enclosure size including fittings	21.25 x 32.5 x 9
Enclosure rating	NEMA 3, NEMA 4 available
Mounted at customer site via	Brackets at top and bottom of box
Efficiency	98.90%
Operating pressure range	0-150 PSI
BTU output per hour	92,124
Temperature output maximum	200
Output temperature settings available	90,110,125,145,155,185,200
Output temperature adjustable	No, With the optional ETC you can adjust the temperature in recirculation systems
Temperature output minimum	90
Freeze protection	Optional
Minimum flow to engage	2 G.P.M. with optional flow switch, 0 without the switch
Number of overtemp protections	Two
Individually fused elements	Yes
Maximum flow in G.P.M. at 60 PSI	32
Shipping weight in Lbs.	58
Shipping box size	25 3/8 x 14 x 20 3/8
Shipping mode	UPS
Warranty	2 years electrical parts 5 years on heat exchanger

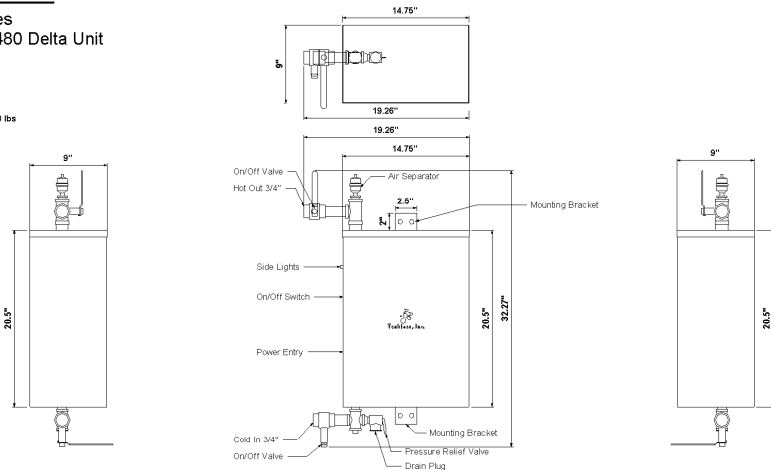


CUT SHEET

Units Covered

CF Series
18 KW 480 Delta Unit
24 KW
27 KW
36 KW
Unit Weight - 68 lbs

Unit Dimensions and Mechanical Info



- Install Instructions for 6 element CF Series heater**
- Remove the front and top cover of the heater.
 - Mount heater to the wall using the brackets provided or the holes in the back of the unit.
 - Insert the air separator, "AS", which was also inside the heater box with the owner's manual.
 - Connect hot and cold water and the pressure relief valve to the drain.
 - The customer needs to match the pipe assemblies to the unit.
 - Connect electrical lines one thru the one and ground to the heater. There is one entry point in the top on the bottom and one on each side. Carry the breaker and wire size on engineering chart based on size of heater and voltage.
 - Hot water flow the heater for 28 seconds.
 - Check the delay switch setting and change if desired. The factory setting is 1 minute. Once the water pressure readings to show 1 PSI the delay timer starts and the heater comes on after the delay time same has elapsed.
 - Test on the thermostat.
 - Replace cover.
 - Turn on the switch to the heater.
 - Wait for 1 minute for the pressure switch to engage or whatever thermostat you used if you changed the delay settings.

- Notes:
1. Red Lines represent customer supplied pipe or electrical
2. Main Power can come in from the bottom or either side

Tankless, Inc.			
CF Series 6 Element Heater			
DATE	REVISION	SHEET OF 1	
01/20/16 4:56:31 PM		REVISED	06

SUGGESTED SPECIFICATION

Tankless Water Heater shall be a Tankless Inc. model _____, with ___ KW, and _____ vac to heat _____ GPM @ a temperature rise of _____ degrees F. Heating elements shall have an incoloy sheath. Heater shall have 3/4" or larger NPT fittings and have stainless steel heat exchangers and internal plumbing. Hot water storage tanks prohibited. Heating unit will be a Tankless, Inc. product or approved equal.