



2060 Whitfield Park Ave
Sarasota FL 34243
1-800-TANKLESS or 800-826-5537
941 755 6529 FAX
EMAIL INFO@HOTWATERHEATER.COM

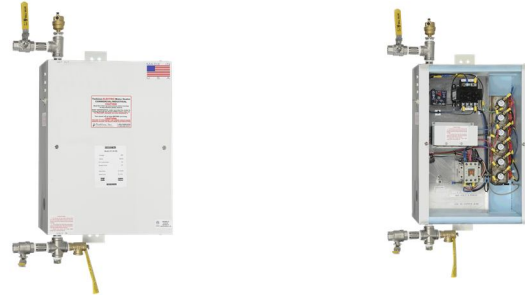


This commercial heater is used for wash up sinks and commercially in many applications including restaurants dishwasher booster applications. At 82K BTU per hour it is one of our more popular commercial heaters.

MODEL NAME

CF 24 KW

FEATURES	DATA
Phase of electricity required	Three
Full load AMP draw at available three phase Voltages	
N/A means this voltage is not available in this model	
Full load Amp draw at 575	N/A
Full load Amp draw at 480	29
Full load Amp draw at 380	36
Full load Amp draw at 240	57
Full load Amp Draw at 208	67
Y or Delta configuration for 480 volt units	Delta
In/out pipe size	3/4"
Heat Exchanger material	304 SS
Enclosure size W x H x D	14.75 x 20.5 x 9
Area needed to install and repair	30 x 44.5 x 40
Enclosure size including fittings	21.25 x 32.5 x 9
Enclosure rating	NEMA 3, NEMA 4 available
Mounted at customer site via	Brackets at top and bottom of box
Efficiency	98.90%
Operating pressure range	0-150 PSI
BTU output per hour	81,888
Temperature output maximum	200
Output temperature settings available	90,110,125,145,155,185,200
Output temperature adjustable	No, With the optional ETC you can adjust the temperature in recirculation systems
Temperature output minimum	90
Freeze protection	Optional
Minimum flow to engage	2 G.P.M. with optional flow switch, 0 without the switch
Number of overtemp protections	Two
Individually fused elements	Yes
Maximum flow in G.P.M. at 60 PSI	32
Shipping weight in Lbs.	58
Shipping box size	25 3/8 x 14 x 20 3/8
Shipping mode	UPS
Warranty	2 years electrical parts 5 years on heat exchanger



CUT SHEET

Units Covered

CF Series
18 KW 480 Delta Unit
24 KW
27 KW
36 KW
Unit Weight - 59 lbs

Unit Dimensions and Mechanical Info

Install Instructions for 6 element CF Series heater

- Remove the front and top cover of the heater.
- Mount heater to the wall using the brackets provided or the holes in the back of the box.
- Install the air separator, "AS" which was also inside the heater box with the owner's manual.
- Connect hot and cold water and the pressure relief valve to the drain.
- The customer needs to reattach the valve assemblies to the unit.
- Connect electrical lines and ground to the heater. There is one entry point to the box on the bottom and one on each side. Verify the breaker and wire size on engineering sheet based on size of heater and voltage.
- Run water thru the heater for 20 seconds.
- Check the dip switch setting and change if desired. The factory setting is 1 minute. Once the water pressure reading is above 2 PSI the delay timer starts and the heater comes on after the delay timeframe has elapsed.
- Turn on the breaker.
- Replace cover.
- Turn on the switch to the heater.
- Wait the 1 minute for the pressure switch to engage or whatever timeframe you need if you changed the delay timeframe.

Notes:

- Red Lines represent customer supplied pipe or electrical
- Main Power can come in from the bottom or either side

Tankless, Inc.	
CF Series 6 Element Heater	
DATE	DRAWN
REVISION	BY

SUGGESTED SPECIFICATION

Tankless Water Heater shall be a Tankless Inc. model _____, with _____ KW, and _____ vac to heat _____ GPM@ a temperature rise of _____ degrees F. Heating elements shall have an incaloy sheath. Heater shall have 3/4" or larger NPT fittings and have stainless steel heat exchangers and internal plumbing. Hot water storage tanks prohibited. Heating unit will be a Tankless, Inc. product or approved equal.