



2060 Whitfield Park Ave  
Sarasota FL 34243  
1-800-TANKLESS or 800-826-5537  
941 755 6529 FAX  
EMAIL INFO@HOTWATERHEATER.COM

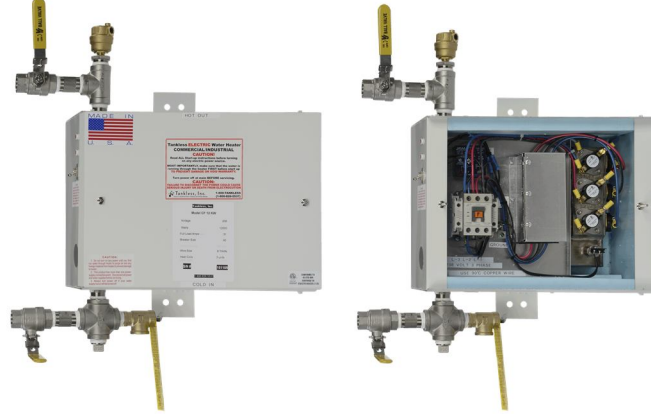


This commercial heater is used for wash up sinks and commercially in restaurants for dishwasher booster applications. At 61K BTU per hour it is good for small applications.

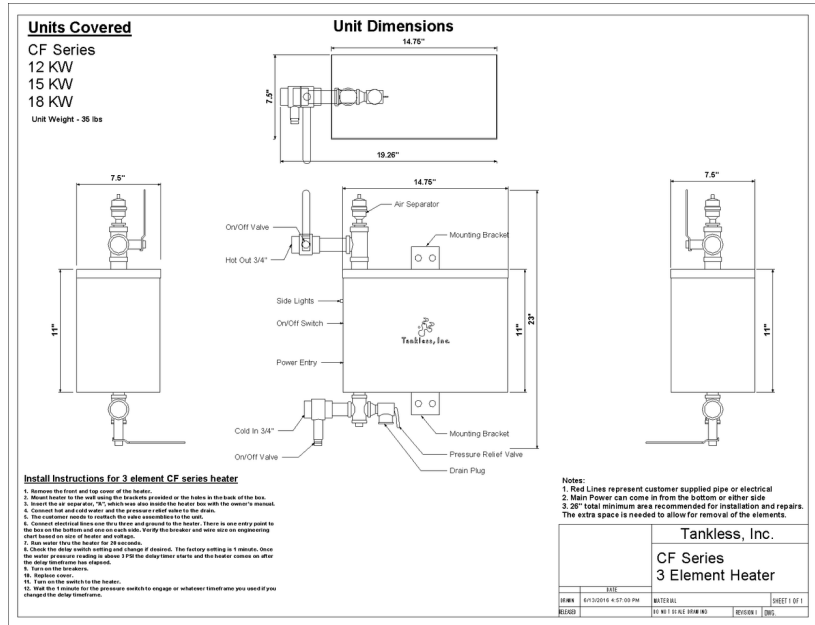
**MODEL NAME**

FEATURES	DATA
Phase of electricity required	Three
Full load AMP draw at available three phase Voltages	
N/A means this voltage is not available in this model	
Full load Amp draw at 575	N/A
Full load Amp draw at 480	22
Full load Amp draw at 380	n/a
Full load Amp draw at 240	43
Full load Amp Draw at 208 Y or Delta configuration for 480 volt units	Y with Delta available
In/out pipe size	3/4"
Heat Exchanger material	304 SS
Enclosure size W x H x D	14.75 x 11 x 7.5
Area needed to install and repair	30 x 35 x 40
Enclosure size including fittings	21.25 x 23 x 7.5
Enclosure rating	NEMA 3, NEMA 4 available
Mounted at customer site via	Brackets at top and bottom of box
Efficiency	98.90%
Operating pressure range	0-150 PSI
BTU output per hour	61,416
Temperature output maximum	200
Output temperature settings available	90,110,125,145,155,185,200
Output temperature adjustable	No, With the optional ETC you can adjust the temperature in recirculation systems
Temperature output minimum	90
Freeze protection	Optional
Minimum flow to engage	2 G.P.M. with flow switch , 0 without the flow switch
Number of overtemp protections	Two
Individually fused elements	Yes
Maximum flow in G.P.M. at 60 PSI	32
Shipping weight in Lbs.	35
Shipping box size	19 1/8 x 18 5/8 x 12 7/8
Shipping mode	UPS
Warranty	2 years electrical parts 5 years on heat exchanger

**CF 18 KW**



**CUT SHEET**



**SUGGESTED SPECIFICATION**

Tankless Water Heater shall be a Tankless Inc. model \_\_\_\_\_, with \_\_\_\_\_ KW, and \_\_\_\_\_ vac to heat \_\_\_\_\_ GPM@ a temperature rise of \_\_\_\_\_degrees F. Heating elements shall have an incoloy sheath. Heater shall have 3/4" or larger NPT fittings and have stainless steel heat exchangers and internal plumbing. Hot water storage tanks prohibited. Heating unit will be a Tankless, Inc. product or approved equal.