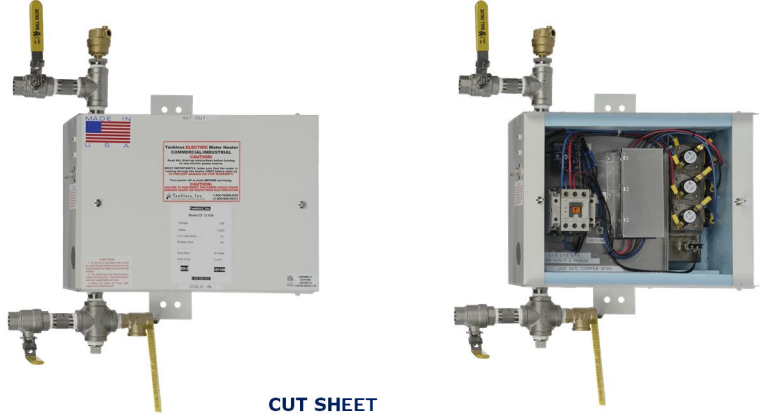


This commercial heater is used for wash up sinks and commercially in restaurants for dishwasher booster applications. At 51K BTU per hour it is good for small applications.

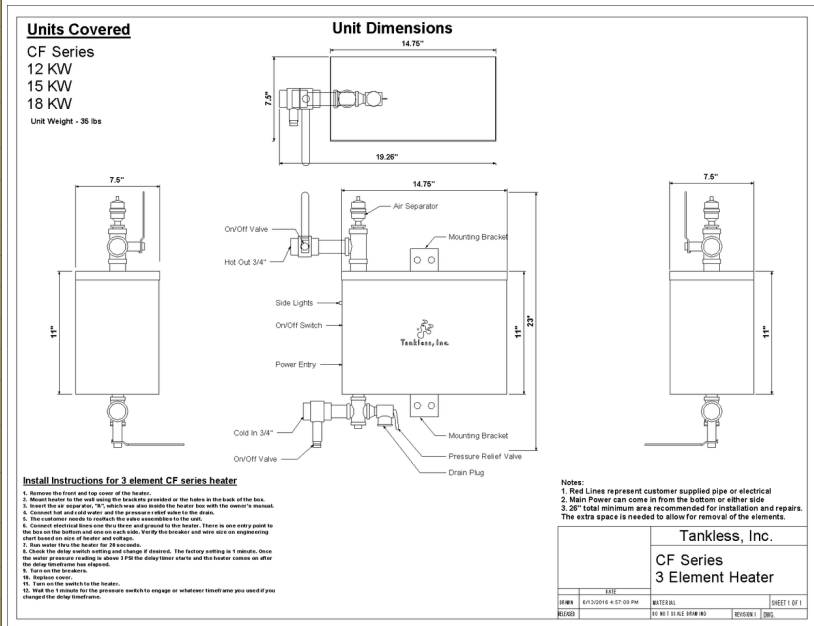
MODEL NAME

CF 15 KW

FEATURES	DATA
Phase of electricity required	Three
Full load AMP draw at available three phase Voltages	
N/A means this voltage is not available in this model	
Full load Amp draw at 575	N/A
Full load Amp draw at 480	18
Full load Amp draw at 380	n/a
Full load Amp draw at 240	36
Full load Amp Draw at 208	42
Y or Delta configuration for 480 volt units	Y only
In/out pipe size	3/4"
Heat Exchanger material	304 SS
Enclosure size W x H x D	14.75 x 11 x 7.5
Area needed to install and repair	30 x 35 x 40
Enclosure size including fittings	21.25 x 23 x 7.5
Enclosure rating	NEMA 3, NEMA 4 available
Mounted at customer site via	Brackets at top and bottom of box
Efficiency	98.90%
Operating pressure range	0-150 PSI
BTU output per hour	51,180
Temperature output maximum	200
Output temperature settings available	90,110,125,145,155,185,200
Output temperature adjustable	No, With the optional ETC you can adjust the temperature in recirculation systems
Temperature output minimum	90
Freeze protection	Optional
Minimum flow to engage	2 G.P.M. with optional flow switch, 0 without the switch
Number of overtemp protections	Two
Individually fused elements	Yes
Maximum flow in G.P.M. at 60 PSI	32
Shipping weight in Lbs.	35
Shipping box size	19 1/8 x 18 5/8 x 12 7/8
Shipping mode	UPS
Warranty	2 years electrical parts 5 years on heat exchanger



CUT SHEET



SUGGESTED SPECIFICATION

Tankless Water Heater shall be a Tankless Inc. model _____, with _____ KW, and _____ vac to heat _____ GPM @ a temperature rise of _____ degrees F. Heating elements shall have an incoloy sheath. Heater shall have 3/4" or larger NPT fittings and have stainless steel heat exchangers and internal plumbing. Hot water storage tanks prohibited. Heating unit will be a Tankless, Inc. product or approved equivalent.