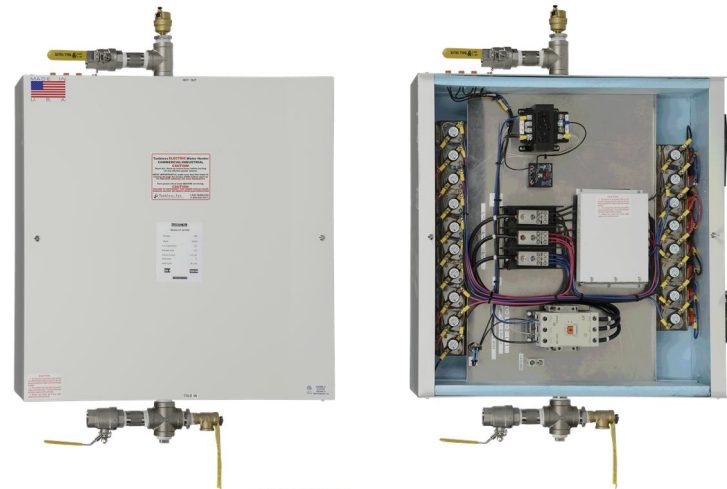


This is currently our most popular 18 element heating unit. At 368K BTU per hour it can do a lot of heating on its own. It can also be linked to work with other heaters to meet almost any heating requirement. This is a popular safety shower unit with the 90 degree thermostats and mixing valve.

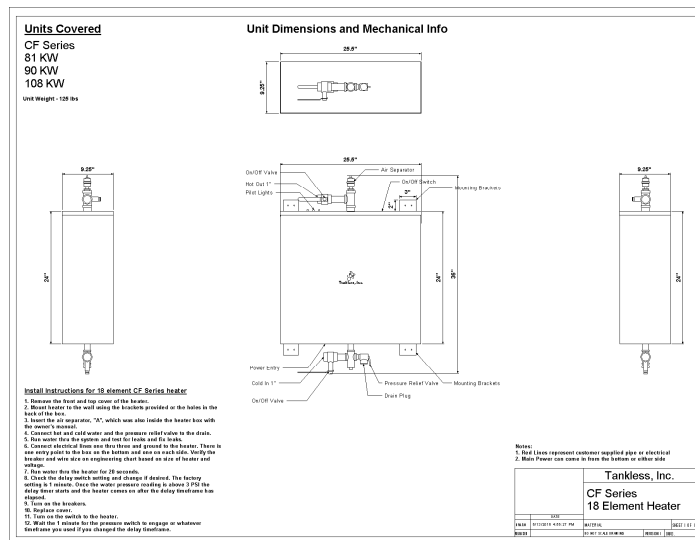
**MODEL NAME**

**CF 108 KW**

FEATURES	DATA
Phase of electricity required	Three
Full load AMP draw at available three phase Voltages	
N/A means this voltage is not available in this model	
Full load Amp draw at 575	108
Full load Amp draw at 480	129
Full load Amp draw at 380	162
Full load Amp draw at 240	258
Full load Amp Draw at 208	300
Y or Delta configuration for 480 volt units	Delta
In/out pipe size	1"
Heat Exchanger material	304 SS
Enclosure size W x H x D	25.5 x 24 x 9.25
Area needed to install and repair	43.5 x 52.25 x 40
Enclosure size including fittings	25.5 x 36 x 9.25
Enclosure rating	NEMA 3, NEMA 4 available
Mounted at customer site via	Brackets at top and bottom of box
Efficiency	98.90%
Operating pressure range	0-150 PSI
BTU output per hour	368,496
Temperature output maximum	200
Output temperature settings available	90,110,125,145,155,185,200
Output temperature adjustable	No, With the optional ETC you can adjust the temperature in recirculation systems
Temperature output minimum	90
Freeze protection	Optional
Minimum flow to engage	2 G.P.M. with optional flow switch, 0 without the switch
Number of overtemp protections	Two
Individually fused elements	Yes
Maximum flow in G.P.M. at 60 PSI	42
Shipping weight in Lbs.	125
Shipping box size	skid only
Shipping mode	truck
Warranty	2 years electrical parts 5 years on heat exchanger



**CUT SHEET**



**SUGGESTED SPECIFICATION**

Tankless Water Heater shall be a Tankless Inc. model \_\_\_\_\_, with \_\_\_\_\_ KW, and \_\_\_\_\_ vac to heat \_\_\_\_\_ GPM@ a temperature rise of \_\_\_\_\_ degrees F. Heating elements shall have an incoloy sheath. Heater shall have 3/4" or larger NPT fittings and have stainless steel heat exchangers and internal plumbing. Hot water storage tanks prohibited. Heating unit will be a Tankless, Inc. product or approved equal.