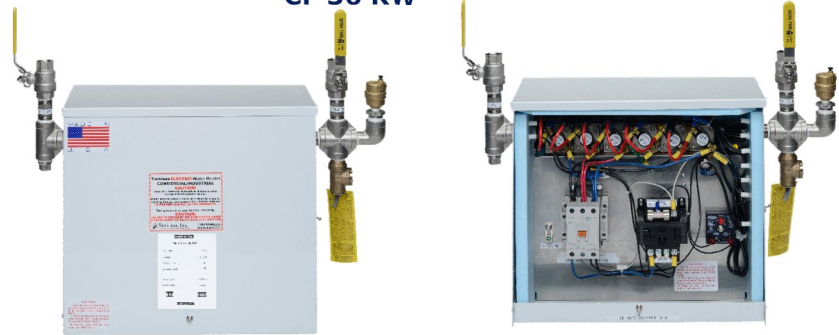


This commercial heater is used small commercial applications and can be installed in parallel to service large applications. Restaurants, food processing, offices, apartments, and housing are a few industries where they are in use. At 122K BTU per hour it is a medium size commercial heater and is our most popular six element model. It is also one our units available in 575 applications for our Canadian customers.

MODEL NAME

CF 36 KW

FEATURES	DATA
Phase of electricity required	Three
Full load AMP draw at available three phase Voltages	
N/A means this voltage is not available in this model	
Full load Amp draw at 575	36
Full load Amp draw at 480	43
Full load Amp draw at 380	54
Full load Amp draw at 240	86
Full load Amp Draw at 208	100
Y or Delta configuration for 480 volt units	Delta
In/out pipe size	3/4"
Heat Exchanger material	304 SS
Enclosure size W x H x D	15.5 x 15 x 9.25
Area needed to install and repair	24.5 x 27 x 40
Enclosure size including fittings	23.25 x 18 x 9.25
Enclosure rating	NEMA 3, NEMA 4 available
Mounted at customer site via	Remove top of box to
Mounted at customer site via	access 5 holes
	in back of box
Efficiency	98.90%
Operating pressure range	0-150 PSI
BTU output per hour	122,832
Temperature output maximum	200
Output temperature settings available	90,110,125,145,155,185,200
Output temperature adjustable	No, With the optional ETC
	you can adjust the temperature
	in recirculation systems
Temperature output minimum	90
Freeze protection	Optional
Minimum flow to engage	2 G.P.M. with optional flow switch, 0 without the switch
Number of overtemp protections	Two
Individually fused elements	Yes
Maximum flow in G.P.M. at 60 PSI	32
Shipping weight in Lbs.	58
Shipping box size	25 3/8 x 14 x 20 3/8
Shipping mode	UPS
Warranty	2 years electrical parts
	5 years on heat exchanger

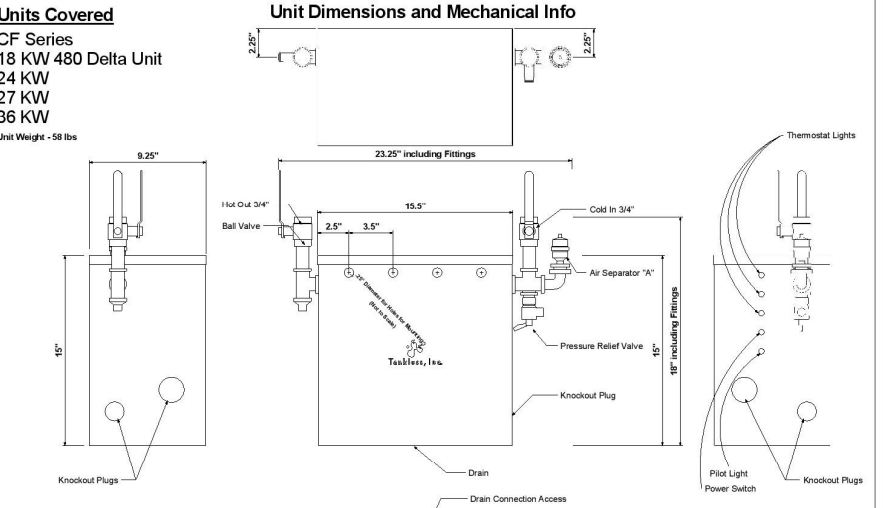


CUT SHEET

Units Covered

CF Series
18 KW 480 Delta Unit
24 KW
27 KW
36 KW
Unit Weight - 58 lbs

Unit Dimensions and Mechanical Info



Install Instructions for 6 element CF Series heater

- Remove the front and top cover of the heater.
- Mount heater to the wall using the brackets provided or the holes in the back of the box.
- Insert the air separator, "A", which was also inside the heater box with the owner's manual.
- Connect hot and cold water and the pressure relief valve to the drain.
- Run gas thru the system and test for leaks and fit leaks.
- Connect electrical lines one they draw and ground to the heater. There is one entry point to the back on the bottom and one on the side. Verify the breaker and wire size on engineering chart based on size of heater and voltage.
- Run wire thru the heater for 30 seconds.
- Check the delay switch setting and change if desired. The factory setting is 1 minute. Once the water pressure reading is above 3 PSI the delay timer starts and the heater comes on after the delay timeframe has elapsed.
- Turn on the heater.
- Replace cover.
- Turn on the switch to the heater.
- Wait the 1 minute for the pressure switch to engage or whatever timeframe you used if you changed the delay timeframe.

Notes:

- Red Lines represent customer supplied pipe or electrical
- Main Power can come in from the bottom or either side

Tankless, Inc.			
CF Series 6 Element Heater			
DATE			
DATE	01-11-2014 PM 06:58:19		
DRAWN	WATERVAL	SHEET 1 OF 1	
REVISED	DO NOT SCALE DRAWING	ISSUED	2014

SUGGESTED SPECIFICATION

Tankless Water Heater shall be a Tankless Inc. model _____, with ____ KW, and _____ vac to heat _____ GPM@ a temperature rise of _____ degrees F. Heating elements shall have an incoloy sheath. Heater shall have 3/4" or larger NPT fittings and have stainless steel heat exchangers and internal plumbing. Hot water storage tanks prohibited. Heating unit will be a Tankless, Inc. product or approved equal.