

At 245K BTU per hour it is good for medium to large applications. This is our most popular size unit. This unit has the titanium sheath elements for use in caustic fluid applications.

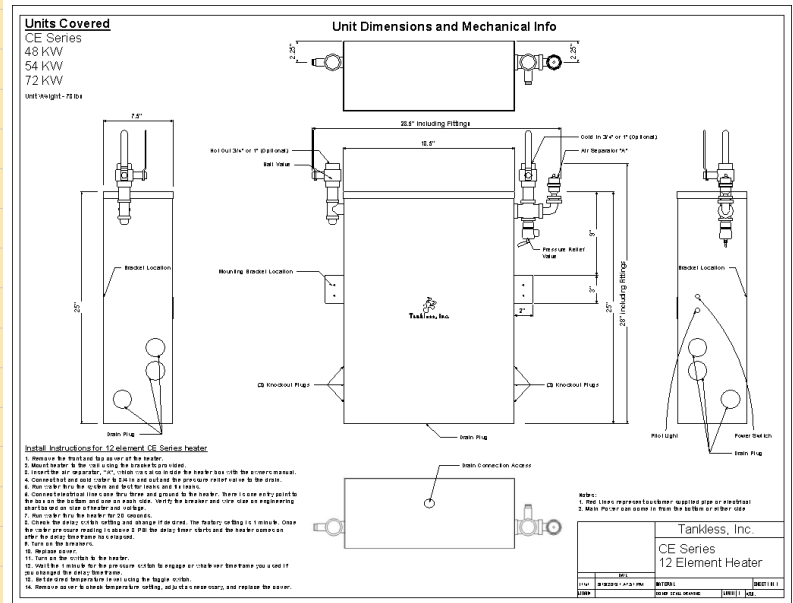
**MODEL NAME**

**CERO 72 KW**

| Features   | Data  |
|--|---|
| Phase of electricity required                        | Three   |
| Full load AMP draw at available three phase Voltages |   |
| n/a means not available                              |   |
| Full load Amp draw at 575                            | N/A   |
| Full load Amp draw at 480                            | 86  |
| Full load Amp draw at 240                            | 172   |
| Full load Amp Draw at 208                            | N/A   |
| Y or Delta configuration for 480 volt units          | Delta   |
| In/out pipe size                                     | 3/4 or 1"   |
| Element Sheath material                              | Titanium  |
| Heat Exchanger material                              | 304 SS  |
| Enclosure size W x H x D                             | 18.5 x 25 x 7.5                                       |
| Area needed to install and repair                    | 39.5 x 48 x 40  |
| Enclosure size including fittings                    | 28.5 x 28 x 7.5                                       |
| Enclosure rating                                     | Nema 3 Nema 4 and 4X available                        |
| Mounted at customer site via                         | Two side brackets                                     |
| Efficiency   | 98.90%  |
| Operating pressure range                             | 0-150 PSI   |
| BTU output per hour                                  | 245,664   |
| Temperature output maximum                           | 185   |
| Output temperature settings available                | 60 to 185 F   |
| Output temperature adjustable                        | Yes, 1 degree increments                              |
| Temperature output minimum                           | 60  |
| Freeze protection                                    | Yes Standard  |
| Number of overtemp protections                       | three   |
| RS 232 interface available                           | Yes   |
| Minimum flow to engage                               | 0.25  |
| Maximum flow at 60 PSI                               | 32  |
| Shipping weight                                      | 110   |
| Shipping box size                                    | skid only   |
| Shipping mode  | truck   |
| Warranty   | 2 years electrical parts<br>5 years on heat exchanger |



**CUT SHEET**



**SUGGESTED SPECIFICATION**

Tankless Water Heater shall be a Tankless Inc. model \_\_\_\_\_, with \_\_\_\_\_ KW, and \_\_\_\_\_ vac to heat \_\_\_\_\_ GPM@ a temperature rise of \_\_\_\_\_ degrees F. Heating elements shall have a titanium sheath. Heater shall have 3/4" or larger NPT fittings and have stainless steel heat exchangers and internal plumbing. Hot water storage tanks prohibited. Heating unit will be a Tankless, Inc. product or approved equal.