



2060 Whitfield Park Ave
Sarasota FL 34243
1-800-TANKLESS or 800-826-5537
941 755 6529 FAX
EMAIL INFO@HOTWATERHEATER.COM



At 92K BTU per hour it is good for smaller applications. The titanium sheath elements make the unit reliable for reverse osmosis water and other very corrosive applications.

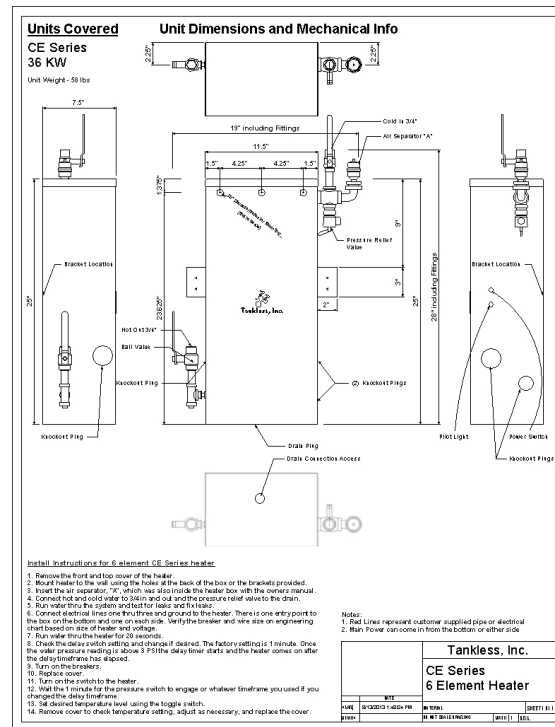
MODEL NAME

FEATURES	DATA
Phase of electricity required	Three
Full load AMP draw at available three phase Voltages	
n/a means not available	
Full load Amp draw at 575	N/A
Full load Amp draw at 480	32
Full load Amp draw at 240	65
Full load Amp Draw at 208	N/A
Y or Delta configuration for 480 volt units	Delta
In/out pipe size	3/4"
Element Sheath material	Titanium
Heat Exchanger material	304 SS
Enclosure size W x H x D	11.5 x 25 x 7.5
Area needed to install and repair	30 x 48 x 40
Enclosure size including fittings	19 x 28 x 7.5
Enclosure rating	Nema 3 Nema 4 and 4X available
Mounted at customer site via	Two side brackets
Efficiency	98.90%
Operating pressure range	0-150 PSI
BTU output per hour	92,124
Temperature output maximum	185
Output temperature settings available	60 to 185 F
Output temperature adjustable	Yes, 1 degree increments
Temperature output minimum	60
Freeze protection	Yes Standard
Number of overtemp protections	three
RS 232 interface available	Yes
Minimum flow to engage	0.25
Maximum flow at 60 PSI	32
Shipping weight	58
Shipping box size	27 3/4 x 33 3/4 x 8
Shipping mode	UPS
Warranty	2 years electrical parts 5 years on heat exchanger

CERO 27 KW



CUT SHEET



SUGGESTED SPECIFICATION

Tankless Water Heater shall be a Tankless Inc. model _____, with _____ KW, and _____ vac to heat _____ GPM @ a temperature rise of _____ degrees F. Heating elements shall have a titanium sheath and stainless steel screw plugs. Heater shall have 3/4" or larger NPT fittings and have stainless steel heat exchangers and internal plumbing. Hot water storage tanks prohibited. Heating unit will be a Tankless, Inc. product or approved equal.