



2060 Whitfield Park Ave
Sarasota FL 34243
1-800-TANKLESS or 800-826-5537
941 755 6529 FAX
EMAIL INFO@HOTWATERHEATER.COM



At 81K BTU per hour it is good for smaller applications. As our smallest six element commercial electronic heater it is field expandable to as large as 36 KW.

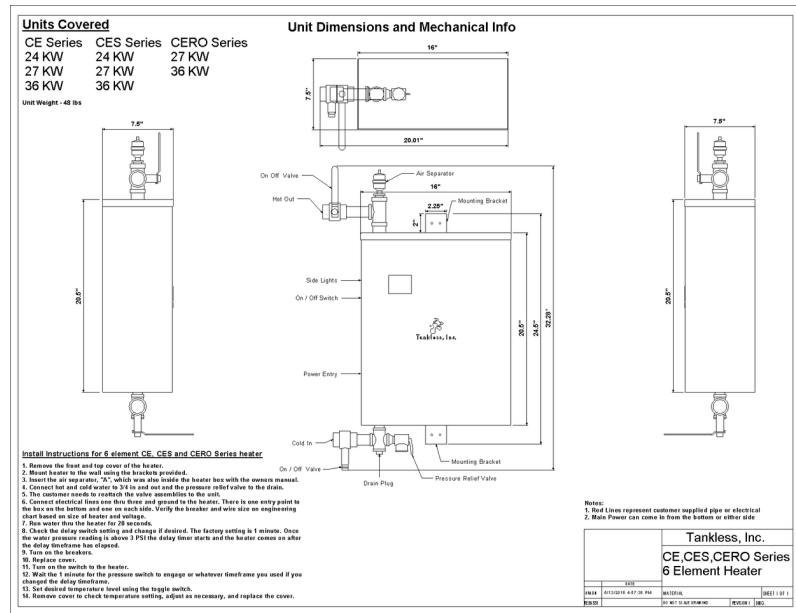
MODEL NAME

CE 24 KW

FEATURES	DATA
Phase of electricity required	Three
Full load AMP draw at available three phase Voltages	
n/a means not available	
Full load Amp draw at 575	n/a
Full load Amp draw at 480	29
Full load Amp draw at 240	57
Full load Amp Draw at 208	67
Y or Delta configuration for 480 volt units	Delta
In/out pipe size	3/4"
Heat Exchanger material	304 SS
Enclosure size W x H x D	16 x 20.5 x 7.5
Area needed to install and repair	43 x 44.5 x 40
Enclosure size including fittings	22.5 x 32.5 x 7.5
Enclosure rating	NEMA 3, NEMA 4 available
Mounted at customer site via	Brackets at top and bottom of box
Efficiency	98.90%
Operating pressure range	0-150 PSI
BTU output per hour	81,888
Temperature output maximum	185
Output temperature settings available	60 to 185 F
Output temperature adjustable	Yes, 1 degree increments
Temperature output minimum	60
Freeze protection	Yes Standard
Number of overtemp protections	three
Individually fused elements	Yes
RS 232 interface available	Yes
Minimum flow to engage in G.P.M.	2.0 with .5 available at no added cost
Maximum flow at 60 PSI	32
Shipping weight	48
Shipping box size	32 x 21 x 14
Shipping mode	UPS
Warranty	2 years electrical parts 5 years on heat exchanger



CUT SHEET



SUGGESTED SPECIFICATION

Tankless Water Heater shall be a Tankless Inc. model _____, with _____ KW, and _____ vac to heat _____ GPM@ a temperature rise of _____ degrees F. Heating elements shall have an incoloy sheath. Heater shall have 3/4" or larger NPT fittings and have stainless steel heat exchangers and internal plumbing. Hot water storage tanks prohibited. Heating unit will be a Tankless, Inc. product or approved equal.