

At 409K BTU per hour the CE 120 is suited for large applications. It is really two CE 60 KW units in a NEMA 4 enclosure. This unit will flow 60 gallons per minute and has three over temperature protections. It is an electronic unit and is adjustable in one degree increments from one degree over your inbound water temperature up to 185 degrees. Software and mechanical over temperature controls allow usage in temperature critical applications. The limited pressure drop due to large chambers and limited restrictions allows installation as part of a larger system.

MODEL NAME	
FEATURES	DATA
Phase of electricity required	Three
Full load AMP draw at available three phase Voltages	n/a means not available
Full load Amp draw at 575	N/A
Full load Amp draw at 480	143
Full load Amp draw at 240	286
Full load Amp Draw at 208	333
Y or Delta configuration for 480 volt units	Delta
In/out pipe size	1 1/4"
Heat Exchanger material	304 SS
Enclosure size W x H x D	36 x 36 x 12
Area needed to install and repair	60 x 53 x 48
Enclosure size including fittings	57 x 36 x 12
Enclosure rating	Nema 3 with Nema 4 or, Nema 4 x available
Mounted at customer site via	Floor thru holes in C channel
Efficiency	98.90%
Operating pressure range	0-150 PSI
BTU output per hour	409,440
Temperature output maximum	185 F
Output temperature settings available	60 to 185 F
Latent Heat Disposal System Available	Yes
Output temperature adjustable	Yes, 1 degree increments
Temperature output minimum	60
Freeze protection	Yes Standard
Number of overtemp protections	three
RS 232 interface available	Yes
Individually fused elements	Yes
Minimum flow to engage	2.0
Maximum flow at 60 PSI	62
Shipping weight	350
Shipping box size	skid only
Shipping mode	truck
Warranty	2 years electrical parts 5 years on heat exchanger

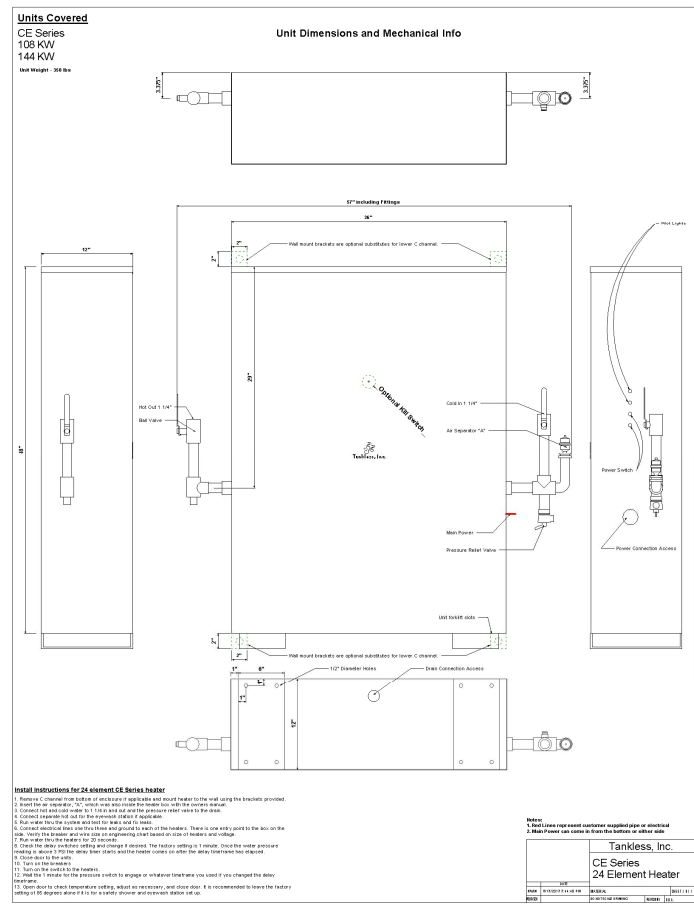
CE 120 KW



Nema 4 enclosure

Nema 3 enclosure

CUT SHEET



SUGGESTED SPECIFICATION

Tankless Water Heater shall be a Tankless Inc. model _____, with _____ KW, and _____ vac to heat _____ GPM@ a temperature rise of _____ degrees F. Heating elements shall have an incoloy sheath. Heater shall have 1" or larger NPT fittings and have stainless steel heat exchangers and internal plumbing. Hot water storage tanks prohibited. Heating unit will be a Tankless, Inc. product or approved equal.