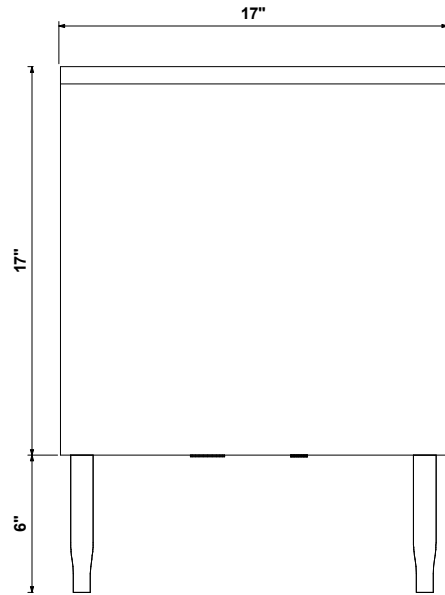


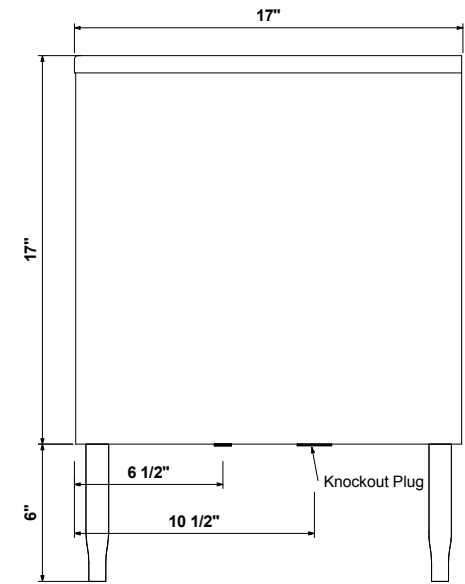
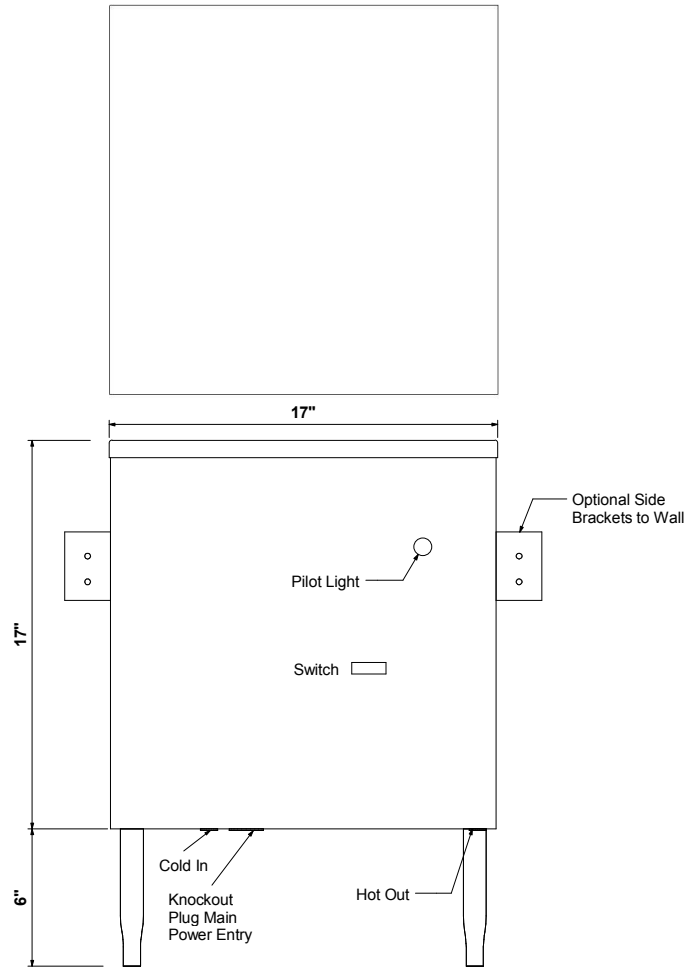
Units Covered

CR Series
 Phase = Three
 12 KW
 15 KW
 18 KW
 24 KW
 27 KW
 36 KW

Unit Weight - 80 lbs

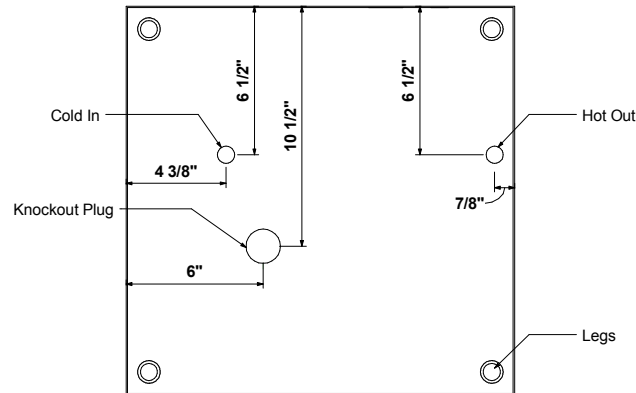


Unit Dimensions and Mechanical Info



Installation Instructions for 3,6, or 12 element CR series heater

1. Remove the front cover and right side panel of the enclosure.
2. Mount heater to the wall or floor using the mounting brackets provided or the legs C on the bottom of the enclosure.
3. Connect hot and cold water to 3/4 in and out and pressure relief valve to drain.
 Valves are not supplied by the manufacturer. The pressure relief valve is required and the on/off valves are recommended.
4. Fill the tank and allow the air separator to bleed out all air and test for leaks and fix leaks...
5. Connect electrical lines one thru three and ground to the heaters. Verify breaker size on engineering chart based on size of heaters and voltage.
6. Run water thru the heater for 30-40 seconds. The unit holds about 6 gallons so it will take sometime to fill and relieve the air.
7. Check delay switches setting and change if desired. Factory setting is 1 minute which will result in a delay of the heater coming on in the case of a drop in water pressure below 3 PSI or the water level in the tank drops below the flow switch.
8. Replace the front three sided cover and top of the enclosure.
9. Turn on the breaker/so
10. Turn on switch.
11. The system is operational.



- Notes:
1. Red Lines represent customer supplied pipe or electrical
 2. Main Power can come in from the bottom or either side

		Tankless, Inc.	
		CR Series 12,15,18,24,27,36 Element Heater	
	DATE		
DRAWN	31-10-2014 PM 05:09:11	MATERIAL	SHEET 1 OF 1
RELEASED		DO NOT SCALE DRAWING	REVISION 1 DWG.